

## HYDROSCAND MACHINES

### PRODUCT GROUP 900

In Hydroscands machine program you will find machines for hydraulic hose assembly, from swaging machines to collapse mandrels.

The program also includes equipment for assembling, flattening and pipe bending.

Our strive is to always develop and improve our machine assortment. Therefore, we have continued to develop our automatic machines even further.

Visit your local Hydroscand branch for further information

### TABLE OF CONTENTS



MACHINES	PAGE
Cutting machines	335-340
Skive and Push-On machines	341-346
Swaging machines	347-351
Marking systems	352-356
Cleaning systems	357-361
Other machines	362-363
Pipe bending machines	364-367



**9085 KNIFECUT 4-30BT**



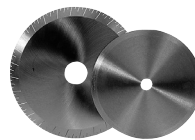
KnifeCut 4-30BT is a pneumatically operated cutting tool for cables and for hoses with polyamide and textile reinforcement. It is suitable for hoses from 4 mm to 30 mm OD. KnifeCut 4-30BT is controlled by a foot pedal, and is delivered with two tools, one for standard hoses and one for twin hoses. Because of the guillotine knife, the cut is in perfect angle and leaves the hose free from rubber waste.

Length: 250 mm  
 Width: 320 mm  
 Height: 440 mm  
 Weight: 14 kg

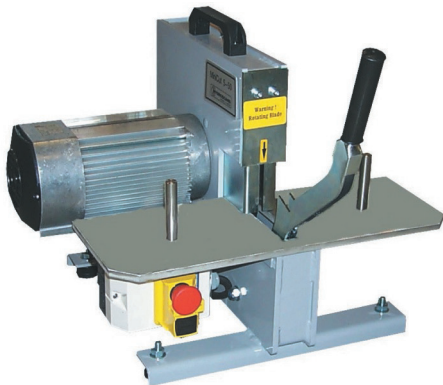
**ACCESSORIES**

Part number	Type
9085-01-01	KnifeCut 4-30BT

Part number	Type
9079-99-01	Cutting blade 50x55x2,5



**9006 MINICUT 5-50**



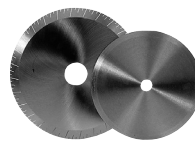
A manually operated cutting machine designed for smaller workshops and service vans. MiniCut has a robust construction, is highly reliable and easy to use. There are three different motor alternatives to choose from: 12V, 230V single phase and 230/400/460V 3-phase. The machine is prepared with a smoke evacuation connection and it's suitable for braided hoses up to 2".

Length: 450 mm  
 Width: 400 mm  
 Height: 430 mm  
 Weight: 45 kg

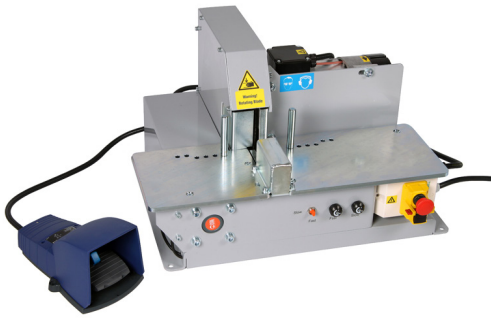
**ACCESSORIES**

Part number	Type
9006-01-00	MiniCut 5-50 3-phase / 3kW 400V/16A/50Hz
9006-01-00N	MiniCut 5-50 3-phase / 3kW 230V/16A/50Hz
9006-02-00	MiniCut 5-50 1-phase / 2,2kW 230V/16A/50Hz
9006-03-00	MiniCut 5-50 1kW 12/24V

Part number	Type
9003-00-03	Cutting blade "Standard" 300x3x50
9003-01-02	Cutting blade "Toothed TS" 300x3x50



**9031-00-03 MIDICUT 5-50P**



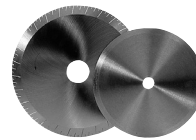
MidiCut 5-50P is a pneumatically operated hose cutting machine for the medium sized workshop or the small serial production. The machine is very safe and easy to use.

Length: 705 mm  
 Width: 570 mm  
 Height: 385 mm  
 Weight: 80 kg

**ACCESSORIES**

Part number	Type
9031-00-03	MidiCut 5-50P, 400V 3-phase 5kW

Part number	Type
9003-00-03	Cutting blade "Standard" 300x3x50
9003-01-02	Cutting blade "Toothed TS" 300x3x50



**9009 MAXICUT 5-60 OT**



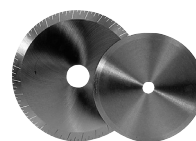
MaxiCut 5-60 is a high performance and very safe pneumatically operated hose cutting machine for the large workshop. The cutter has a 5 kW motor and a 400 mm cutting blade. The machine is suitable for hoses with up to four steel braids with dimensions from 3/16" up to 2". This model has an "open throat" hatch for inserting the hose from the front. The machine is also equipped with a pre-selection for three different cutting speeds to avoid overheating of the cutting blade and variable cutting stroke.

Length: 700 mm  
 Width: 600 mm  
 Height: 1300 mm  
 Weight: 140 kg

**ACCESSORIES**

Part number	Type
9009-00-00	MaxiCut 5-60, 400V 3-phase 5kW
9009-00-01	MaxiCut 5-60, 230V 3-phase 5kW

Part number	Type
9009-01-01	Cutting blade "Standard" 400x4x50
9009-01-02	Cutting blade "Toothed TS" 400x4x50



## 9010 POWERCUT 5-75 PH



A pneumatic hose cutting machine for the large workshop. The cutter has a 7,5 kW engine and a 520 mm blade. The machine is suitable for hoses with up to six steel braids with dimensions from 3/16" up to 2" and for industrial hoses up to dimension 3". Max outside hose diameter, 90 mm.

The machine has an "open throat" hatch for inserting the hose from the front. Comes with three different cutting speeds and variable feeding speed. Adapter for smoke evacuation Ø100. Counter for 0-9999 pcs. The machine comes with pneumatic bend when cutting a hose.

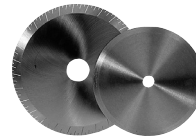
NB! For hoses with four and six steel braids, use toothed cutting blade.

Length: 900 mm  
 Width: 645 mm  
 Height: 1150 mm  
 Weight: 210 kg

### ACCESSORIES

Part number	Type
9010-00-00	PowerCut 5-75 400V/25A/50Hz 7,5 kW
9010-00-15	PowerCut 5-75 230V/25A/50Hz 7,5 kW

Part number	Type
9005-00-01	Cutting blade "standard" 520x4x38
9005-00-03	Cutting blade "toothed TF" 520x4x38
9005-00-04	Cutting blade "toothed TS" 520x4x50
9005-01-04	Adapter ring 50x38 for cutting blade 9005-00-04



9080 AUTOCUT 5-20L



AutoCut 5-20L is an automatic cutting machine for textile and steel reinforced hoses up to 3/4". It is very easy to use thanks to the touch screen and has excellent length tolerance. Hose Reel and conveyor are optional, available in different design to meet your request. There is also an inductive heating unit available as option used to prevent flaring hose ends when cutting stainless steel reinforced teflon hose.

- Advantages:
- Fast and easy operation.
  - Safety system to protect the user
  - Adjustable feeding speed
  - Adjustable cutting speed
  - Excellent cut tolerance
  - Fast and easy tool change.
  - Cutting blade completely encased.

Technical data

AutoCut 5-20L

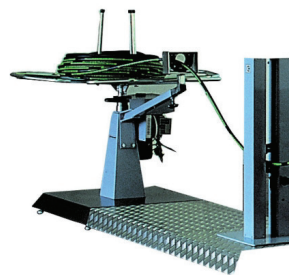
Hose diameter	8-30 mm OD
Cutting capacity	500 pcs/hour
Max load hose reel	400 kg
Max cutting length	32000 mm
Cutting tolerance	± 1 mm
Cutting tolerance	Acc. to DIN 20066
Motor	5,5 kW 2880 rpm
Voltage 3-phase	230/400V/20A/50
Feeding motor	0,5 kW
Feeding speed	10-30 m/min
Cutting blade diameter	400 mm
Shaft diameter cutting blade	50 mm
Air pressure	min. 6,0 bar
Hose connection for smoke evacuation system	100 mm
Colour	Light grey
Storage capacity	1200 part no.
Length	1070 mm
Width	750 mm
Height	1100 mm
Weight	475 kg

HoseReel-EOS

Length	3100 mm
Width	750 mm
Height	1100 mm
Weight	155 kg

Conveyor

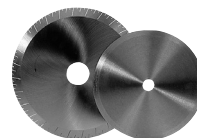
Length	2000/3000 mm
Width	300 mm
Height	1400 mm
Weight	75/100 kg



ACCESSORIES

Part number	Type
9080-03-00	AutoCut 5-32 400V / 5,5kW 3-phase
9080-01-11	HoseReel-EOS
9080-01-21	Conveyor 2 m
9090-00-00	CellCon 2000 digital measuring
9080-01-22	Conveyor 3 m
9090-00-02	CellCon 2900 digital measuring

Part number	Type
9005-00-04	Cutting blade "toothed" 520x4x50
9080-01-31	Printer for work reports
9080-01-35	Remote control, foot pedal
9080-00-03	Remote control, handle
9080-00-06	KnifeCut 4-30AC, pneumatic ending tool
9080-00-13	Hose joint detection system



9080 AUTOCUT 5-32C



AutoCut 5-32C is a computer-controlled and automatic cutting machine. The cutter has a 5,5 kW engine and a 520 mm blade. Suitable for hoses with one and two steel braids from dimension 3/16" to 1 1/4" and hoses with four steel braids up to dimension 1". It is easy to operate because of the logic control unit and LCD-display. The machine is designed for easy change of tools. The workflow is optimized by adding the hose reel and the conveyor unit.

Advantages

- Fast and easy operation
- Safety system to protect the operator
- Computer controlled process (PLC)
- Colour touch-screen control
- Storage capacity of 1200 part numbers
- Cutting tolerance much better than according to DIN 20066
- Fast and easy tool change
- Three feed speeds, 18/28/40 metre/minute
- Three cutting speeds
- Two cutting heights
- Cutting blade completely encased

Technical data

AutoCut 5-32C

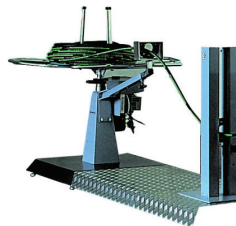
Hose diameter	8-50 mm OD
Cutting capacity	480-700 st/tim
Max load hose reel	400 kg
Max cutting length	99999 mm
Cutting tolerance	± 1 mm
Cutting tolerance	Acc. to DIN 20066
Motor	5,5 kW 3000 rpm
Voltage 3-phase	230/400V/25A/50Hz
Feeding motor	0,35 kW
Feeding speed	18/28/40 m/min
Cutting blade diameter	520 mm
Shaft diameter cutting blade	38 mm
Air pressure	min. 7,0 bar
Hose connection for smoke evacuation system	100 mm
Colour	Light grey/dark grey
Storage capacity	1200 part no.
Length	1070 mm
Width	750 mm
Height	1100 mm
Weight	475 kg

HoseReel-EOS

Length	3100 mm
Width	750 mm
Height	1100 mm
Weight	155 kg

Conveyor

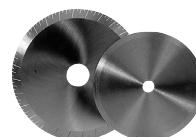
Length	2000/3000 mm
Width	300 mm
Height	1400 mm
Weight	75/100 kg



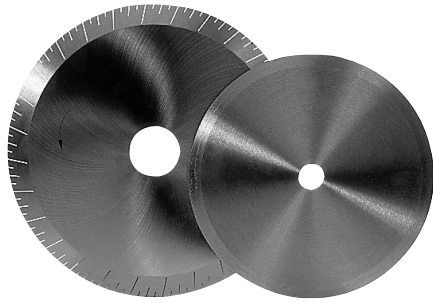
ACCESSORIES

Part number	Type
9080-01-00	AutoCut 5-32 400V / 5,5kW 3-fas
9080-01-11	HoseReel-EOS
9080-01-21	Conveyor 2 m
9090-00-00	CellCon 2000 digital measuring
9080-01-22	Conveyor 3 m
9090-00-02	CellCon 2900 digital measuring

Part number	Type
9005-00-04	Cutting blade "toothed" 520x4x50
9080-01-31	Printer for work reports
9080-01-35	Remote control, foot pedal
9080-00-03	Remote control, handle
9080-00-06	KnifeCut 4-30AC, pneumatic ending tool
9080-00-13	Hose joint detection system



**900x CUTTING BLADES**



Hydroscand can offer three different types of cutting blades: one standard blade and two toothed blade types, all manufactured in hardened steel. The blades perform quick and clean cutting results on 1-, 2-, 3-, 4- and 6-braided steel hoses. Available in dimensions 200 mm – 520 mm.

Part number	Type
9002-00-02	Cutting blade std. 200x3/40 mm
9001-00-01	Cutting blade std. 250x3/16 mm
9001-00-02	Cutting blade std. 250x3/25 mm
9006-06-01	Cutting blade std. 250x3/25,4 mm
9006-00-01	Cutting blade std. 250x3/32 mm
9003-00-01	Cutting blade std. 300x3/16 mm
9009-01-01	Cutting blade std. 400x4/50 mm
9005-00-01	Cutting blade std. 520x4/38 mm
9006-01-02	Cutting blade toothed 250x3/40 mm
9003-01-02	Cutting blade toothed 300x3/50 mm
9009-01-02	Cutting blade toothed 400x4/50 mm
9005-00-03	Cutting blade toothed 520x4/38 mm
9005-00-04	Cutting blade toothed 520x4/50 mm

**ACCESSORIES**

Part number	Type
9006-01-05	Adapter ring for toothed cutting blade 40x25,4 mm
9006-01-06	Adapter ring for toothed cutting blade 40x32 mm
9005-01-07	Adapter ring for toothed cutting blade 50x32 mm
9005-01-04	Adapter ring for toothed cutting blade 50x38 mm
9005-01-05	Adapter ring for toothed cutting blade 50x40 mm

**9010 SCRAPCUT 5-50**



ScrapCut is used to cut off the fitting so that the old hose can be recycled. The machine uses a guillotine because this type of cutting does not require high tolerance. This will eliminate the smoke and dust in the workshop.

Length: 1300 mm  
 Width: 800 mm  
 Height: 1900 mm  
 Weight: 240 kg

**ACCESSORIES**

Part number	Type	Part number	Type
9010-10-00	ScrapCut 5-50 400V 50Hz 3-phase	9018-15-40	Knife, top part
9010-10-01	ScrapCut 5-50 230V 50Hz 3-phase	9018-15-41	Knife, bottom part

**9104 HOSE CUTTER FOR THERMOPLASTIC HOSES**

Part number	Type
9104-01-00	Hose cutter for termoplastic hoses and pneumatic pipes
9104-01-01	Knife for hose cutter





## 9020-00 SKALMAN



Length: 500 mm  
Weight: 4 kg

Part number	Type
9020-00-05	SkalMan, manual skiving machine (excl. tools)

## ACCESSORIES

Part number	Type
-------------	------

**Skiving tool external short arm - EST**

9022-00-00	Holder to skiving tool + 1 short arm.
9022-00-01	Short arm
9022-00-03	Cutting knife
9022-02-03	Mandrel 3/16"
9022-00-04	Mandrel 1/4"
9022-00-05	Mandrel 5/16"
9022-00-06	Mandrel 3/8"
9022-00-08	Mandrel 1/2"
9022-00-10	Mandrel 5/8"
9022-00-12	Mandrel 3/4"
9022-00-16	Mandrel 1"

A manual skiving machine for use in a vice. Skalman is suitable for the small workshop and is very easy to handle. It is used together with our skiving tools 9022 - EST.

**Skiving tool external long arm - EST**

9022-01-00	Holder to skiving tool + 1 long arm.
9022-00-02	Long arm
9022-00-03	Cutting knife
9022-01-20	Mandrel 1 1/4" long
9022-01-24	Mandrel 1 1/2" long
9022-01-32	Mandrel 2" long

**Skiving tool internal - IST**

9025-01-05	Cutting knife internal 5 mm-3/8"
9025-01-06	Cutting knife internal 6 mm-1/2"
9025-01-08	Cutting knife internal 8 mm-5/8" - 3/4"
9025-01-10	Cutting knife internal 10 mm-1" - 1 1/4"
9025-02-10	Cutting knife internal long 10 mm-1 1/2" - 2"
9025-15-06	Skiving tool internal 3/8"
9025-15-08	Skiving tool internal 1/2"
9025-15-10	Skiving tool internal 5/8"
9025-15-12	Skiving tool internal 3/4"
9025-15-16	Skiving tool internal 1"
9025-15-20	Skiving tool internal 1 1/4"
9025-15-24	Skiving tool internal 1 1/2"
9025-15-32	Skiving tool internal 2"

**Skiving tool external/internal - OST See part no. 9025-16**

## 9020 MIDISKIVE 5-50B



Length: 410 mm      Height: 390 mm  
Width: 600 mm      Weight: 35 kg

Part number	Type
9020-04-01	MidiSkive 5-50B 400 V/0,37kW 3-phase
9020-04-02	MidiSkive 5-50B 230 V/0,37kW 1-fas
9020-04-04	MidiSkive 5-50B 230 V/0,37kW 3-fas

## ACCESSORIES

Part number	Type
-------------	------

**Skiving tool external short arm - EST**

9022-00-00	Holder to skiving tool + 1 short arm.
9022-00-01	Short arm
9022-00-03	Cutting knife
9022-02-03	Mandrel 3/16"
9022-00-04	Mandrel 1/4"
9022-00-05	Mandrel 5/16"
9022-00-06	Mandrel 3/8"
9022-00-08	Mandrel 1/2"
9022-00-10	Mandrel 5/8"
9022-00-12	Mandrel 3/4"
9022-00-16	Mandrel 1"

A bench-mounted skiving machine for the medium sized workshop for inner and outer skiving. MidiSkive is easily controlled by either a button or a foot pedal.

**Skiving tool external long arm - EST**

9022-01-00	Holder to skiving tool + 1 long arm.
9022-00-02	Long arm
9022-00-03	Cutting knife
9022-01-20	Mandrel 1 1/4" long
9022-01-24	Mandrel 1 1/2" long
9022-01-32	Mandrel 2" long

**Skiving tool internal - IST**

9025-01-05	Cutting knife internal, 5 mm-3/8"
9025-01-06	Cutting knife internal, 6 mm-1/2"
9025-01-08	Cutting knife internal 8 mm-5/8" - 3/4"
9025-01-10	Cutting knife internal 10 mm-1" - 1 1/4"
9025-02-10	Cutting knife internal long 10 mm-1 1/2" - 2"
9025-15-06	Skiving tool internal 3/8"
9025-15-08	Skiving tool internal 1/2"
9025-15-10	Skiving tool internal 5/8"
9025-15-12	Skiving tool internal 3/4"
9025-15-16	Skiving tool internal 1"
9025-15-20	Skiving tool internal 1 1/4"
9025-15-24	Skiving tool internal 1 1/2"
9025-15-32	Skiving tool internal 2"

**Skiving tool external/internal - OST See part no. 9025-16**

**9020 MIDISKIVE 5-50C**



Length: 900 mm  
 Width: 850 mm  
 Height table: 800-950 mm  
 Height total: Max 2150 mm  
 Weight: 75 kg

A benched skiving machine for the medium sized workshop for inner and outer skiving. MidiSkive is easily controlled by either a button or a foot pedal. It can also be delivered with a workbench and toolholder.

Part number	Type
9020-03-00	MidiSkive 5-50C 400 V/0,37kW 3-phase

**ACCESSORIES**

Part number	Type
-------------	------

**Skiving tool external short arm - EST**

9022-00-00	Holder to skiving tool + 1 short arm.
9022-00-01	Short arm
9022-00-03	Cutting knife
9022-02-03	Mandrel 3/16"
9022-00-04	Mandrel 1/4"
9022-00-05	Mandrel 5/16"
9022-00-06	Mandrel 3/8"
9022-00-08	Mandrel 1/2"
9022-00-10	Mandrel 5/8"
9022-00-12	Mandrel 3/4"
9022-00-16	Mandrel 1"

**Skiving tool external long arm - EST**

9022-01-00	Holder to skiving tool + 1 long arm.
9022-00-02	Long arm
9022-00-03	Cutting knife
9022-01-20	Mandrel 1 1/4" long
9022-01-24	Mandrel 1 1/2" long
9022-01-32	Mandrel 2" long

**Skiving tool internal - IST**

9025-01-05	Cutting knife internal 5 mm-3/8"
9025-01-06	Cutting knife internal 6 mm-1/2"
9025-01-08	Cutting knife internal 8 mm-5/8" - 3/4"
9025-01-10	Cutting knife internal 10 mm-1" - 1 1/4"
9025-02-10	Cutting knife internal long 10 mm-1 1/2" - 2"
9025-15-06	Skiving tool internal 3/8"
9025-15-08	Skiving tool internal 1/2"
9025-15-10	Skiving tool internal 5/8"
9025-15-12	Skiving tool internal 3/4"
9025-15-16	Skiving tool internal 1"
9025-15-20	Skiving tool internal 1 1/4"
9025-15-24	Skiving tool internal 1 1/2"
9025-15-32	Skiving tool internal 2"

**Skiving tool external/internal - OST See part no. 9025-16**

**9082 POWERSKIVE 5-50**



Length: 1200 mm  
 Width: 680 mm  
 Height: 1080 mm  
 Weight: 132 kg

A semi-automatic skiving machine for inner and outer skiving. With the Push-On-tool, the machine can also assembly hose and fitting. The machine is quick, reliable and easy to use. An unique centering system assures the hose's correct position during the entire skiving and inserting process.

Part number	Type
9082-03-00	PowerSkive 5-50 400V/0,75kW 3-phase 315 rpm
9082-03-01	PowerSkive 5-50 230V/0,75kW 1-phase 700 rpm

**ACCESSORIES**

Part number	Type
-------------	------

**Skiving tool, external, short arm - EST**

9022-00-00	Holder to skiving tool + 1 short arm.
9022-00-01	Short arm
9022-00-03	Cutting knife
9022-02-03	Mandrel 3/16"
9022-00-04	Mandrel 1/4"
9022-00-05	Mandrel 5/16"
9022-00-06	Mandrel 3/8"
9022-00-08	Mandrel 1/2"
9022-00-10	Mandrel 5/8"
9022-00-12	Mandrel 3/4"
9022-00-16	Mandrel 1"

**Skiving tool external long arm - EST**

9022-01-00	Holder to skiving tool + 1 long arm.
9022-00-02	Long arm
9022-00-03	Cutting steel
9022-01-20	Mandrel 1 1/4" long
9022-01-24	Mandrel 1 1/2" long
9022-01-32	Mandrel 2" long

**Skiving tool internal - IST**

9025-01-05	Cutting knife internal 5 mm-3/8"
9025-01-06	Cutting knife internal 6 mm-1/2"
9025-01-08	Cutting knife internal 8 mm-5/8" - 3/4"
9025-01-10	Cutting knife internal 10 mm-1" - 1 1/4"
9025-02-10	Cutting knife internal long 10 mm-1 1/2" - 2"
9025-15-06	Skiving tool internal 3/8"
9025-15-08	Skiving tool internal 1/2"
9025-15-10	Skiving tool internal 5/8"
9025-15-12	Skiving tool internal 3/4"
9025-15-16	Skiving tool internal 1"
9025-15-20	Skiving tool internal 1 1/4"
9025-15-24	Skiving tool internal 1 1/2"
9025-15-32	Skiving tool internal 2"

**Skiving tool external/internal - OST See part no. 9025-16**



## 9082-02 TWINSKIVE 5-50



Length: 1200 mm  
 Width: 680 mm  
 Height: 1080 mm  
 Weight: 123 kg

A semi-automatic skiving machine for inner and outer skiving. With the Push-On-tool, the machine can also assembly hose and fitting. The machine is quick, reliable and easy to use. An unique centering system assures the hose's correct position during the entire skiving and inserting process.

Part number	Type
9082-02-00	TwinSkive 5-50 400V/2x0,75kW 3-phase, 315 rpm
9082-02-01	TwinSkive 5-50 230V/2x0,75kW 3-phase, 315 rpm

## ACCESSORIES

Part number	Type
<b>Skiving tool external short arm - EST</b>	
9022-00-00	Holder to skiving tool + 1 short arm.
9022-00-01	Short arm
9022-00-03	Cutting knife
9022-02-03	Mandrel 3/16"
9022-00-04	Mandrel 1/4"
9022-00-05	Mandrel 5/16"
9022-00-06	Mandrel 3/8"
9022-00-08	Mandrel 1/2"
9022-00-10	Mandrel 5/8"
9022-00-12	Mandrel 3/4"
9022-00-16	Mandrel 1"

**Skiving tool external long arm - EST**

9022-01-00	Holder to skiving tool + 1 long arm.
9022-00-02	Long arm
9022-00-03	Cutting knife
9022-01-20	Mandrel 1 1/4" long
9022-01-24	Mandrel 1 1/2" long
9022-01-32	Mandrel 2" long

**Skiving tool internal - IST**

9025-01-05	Cutting knife internal 5 mm-3/8"
9025-01-06	Cutting knife internal 6 mm-1/2"
9025-01-08	Cutting knife internal 8 mm-5/8" - 3/4"
9025-01-10	Cutting knife internal 10 mm-1" - 1 1/4"
9025-02-10	Cutting knife internal long 10 mm-1 1/2" - 2"
9025-15-06	Skiving tool internal 3/8"
9025-15-08	Skiving tool internal 1/2"
9025-15-10	Skiving tool internal 5/8"
9025-15-12	Skiving tool internal 3/4"
9025-15-16	Skiving tool internal 1"
9025-15-20	Skiving tool internal 1 1/4"
9025-15-24	Skiving tool internal 1 1/2"
9025-15-32	Skiving tool internal 2"

**Skiving tool external/internal - OST See part no. 9025-16**

**9022 SKIVING TOOLS - EST**



Hydroscand's assortment consists of both inner and outer skiving tools. The external tool, that can be supplied with two cutters, are used for bradied and spiral hoses. The internal tool is mainly used for braided high pressure hoses. Hydroscand can also offer a skiving tool for OneSkive 5-50, which makes simultaneous inner and outer skiving possible.

**Part number    Type**

**Skiving tool, external, short arm - EST**

9022-00-00	Holder to skiving tool + 1 short arm.
9022-00-01	Short arm
9022-00-03	Cutting knife
9022-02-03	Mandrel 3/16"
9022-00-04	Mandrel 1/4"
9022-00-05	Mandrel 5/16"
9022-00-06	Mandrel 3/8"
9022-00-08	Mandrel 1/2"
9022-00-10	Mandrel 5/8"
9022-00-12	Mandrel 3/4"
9022-00-16	Mandrel 1"

**Part number    Type**

**Skiving tool, external, long arm - EST**

9022-01-00	Holder to skiving tool + 1 long arm.
9022-00-02	Long arm
9022-00-03	Cutting knife
9022-01-20	Mandrel 1 1/4" long
9022-01-24	Mandrel 1 1/2" long
9022-01-32	Mandrel 2" long

**9025 SKIVING TOOLS - IST**



Hydroscand's assortment consists of both inner and outer skiving tools. The external tool, that can be supplied with two cutters, are used for bradied and spiral hoses. The internal tool is mainly used for braided high pressure hoses. Hydroscand can also offer a skiving tool for OneSkive 5-50, which makes simultaneous inner and outer skiving possible.

**Part number    Type**

9025-01-05	Cutting knife internal 5 mm-3/8"
9025-01-06	Cutting knife internal 6 mm-1/2"
9025-01-08	Cutting knife internal 8 mm-5/8" - 3/4"
9025-01-10	Cutting knife internal 10 mm-1" - 1 1/4"
9025-02-10	Cutting knife internal long 10 mm-1 1/2" - 2"
9025-15-06	Skiving tool internal 3/8"
9025-15-08	Skiving tool internal 1/2"
9025-15-10	Skiving tool internal 5/8"
9025-15-12	Skiving tool internal 3/4"
9025-15-16	Skiving tool internal 1"
9025-15-20	Skiving tool internal 1 1/4"
9025-15-24	Skiving tool, internal 1 1/2"
9025-15-32	Skiving tool internal 2"

## 9025-16 SKIVING TOOLS - OST



Hydroscand's assortment consists of both inner and outer skiving tools. The external tool, that can be supplied with two cutters, are used for bradied and spiral hoses. The internal tool is mainly used for braided high pressure hoses. Hydroscand can also offer a skiving tool for OneSkive 5-50, which makes simultaneous inner and outer skiving possible

Part number	Type
<b>Skiving tool external/internal - Short arm</b>	
9022-00-00	Holder to skiving tool + 1 short arm.
9022-00-01	Short arm
9025-01-08	Cutting knife internal 6 mm-1/2"
9025-01-08	Cutting knife internal 8 mm-5/8" - 3/4"
9025-01-10	Cutting knife internal 10 mm-1" - 1 1/4"
9025-16-08	Mandrel 1/2"
9025-16-10	Mandrel 5/8"
9025-16-12	Mandrel 3/4"
9025-16-16	Mandrel 1"
9025-16-20	Mandrel 1 1/4"
9022-00-03	Cutting knife
<b>Skiving tool external/internal - Long arm</b>	
9022-01-00	Holder to skiving tool + 1 long arm.
9022-00-02	Long arm
9025-01-10	Cutting knife internal 10 mm 1"-1 1/4"
9025-02-10	Cutting knife internal 10 mm 1 1/2"-2"
9025-16-16	Mandrel 1"
9025-16-20	Mandrel 1 1/4"
9025-16-24	Mandrel 1 1/2"
9025-16-32	Mandrel 2"
9022-00-03	Cutting knife

9083-03 TWINPUSH 5-50



A semi-automatic machine for easy assembly of hose and fitting. The machine is quick, reliable and easy to handle. A unique centering system assures the hose's correct position during the entire skiving and inserting process.

The machine is equipped with two tool holders that make it easier to change between the tool for straight and 45°/90° fittings.

Length: 1200 mm  
 Width: 680 mm  
 Height: 1080 mm  
 Weight: 125 kg

Part number	Type
9083-03-00	TwinPush 5-50, insert machine 230 V 50 Hz 1-phase, excl. tools

9083 PUSH-ON TOOLS

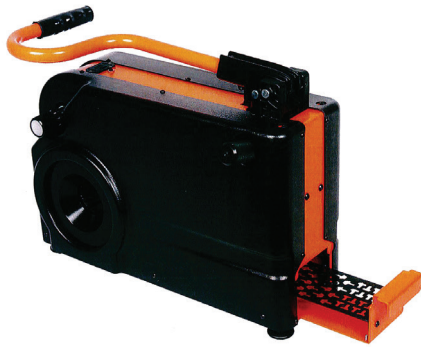


The tool to use for insertion of both straight and 45°/90° fittings into the hose. The Push-On tool is used with AutoSkive 5-50, OneSkive 5-50 and AutoInsert 5-50.

Part number	Type
<b>Push-On tool for straight fittings</b>	
9083-01-03	Push-On tool straight 3/16"
9083-01-04	Push-On tool straight 1/4"
9083-01-05	Push-On tool straight 5/16"
9083-01-06	Push-On tool straight 3/8"
9083-01-08	Push-On tool straight 1/2"
9083-01-10	Push-On tool straight 5/8"
9083-01-12	Push-On tool straight 3/4"
9083-01-16	Push-On tool straight 1"
9083-01-20	Push-On tool straight 1 1/4"
9083-01-24	Push-On tool straight 1 1/2"
9083-01-32	Push-On tool straight 2"

Part number	Type
<b>Push-On tool for 45° and 90° fittings</b>	
9083-02-03	Push-On tool 45°/90° 3/16"
9083-02-04	Push-On tool 45°/90° 1/4"
9083-02-05	Push-On tool 45°/90° 5/16"
9083-02-06	Push-On tool 45°/90° 3/8"
9083-02-08	Push-On tool 45°/90° 1/2"
9083-02-10	Push-On tool 45°/90° 5/8"
9083-02-12	Push-On tool 45°/90° 3/4"
9083-02-16	Push-On tool 45°/90° 1"
9083-02-20	Push-On tool 45°/90° 1 1/4"
9083-02-24	Push-On tool 45°/90° 1 1/2"
9083-02-32	Push-On tool 45°/90° 2"

Part number	Type
<b>Push-On tool for fittings with plastic washer</b>	
9083-03-03	Push-On tool 45°/90° 3/16" PW
9083-03-04	Push-On tool 45°/90° 1/4" PW
9083-03-05	Push-On tool 45°/90° 5/16" PW
9083-03-06	Push-On tool 45°/90° 3/8" PW
9083-03-08	Push-On tool 45°/90° 1/2" PW
9083-03-10	Push-On tool 45°/90° 5/8" PW
9083-03-12	Push-On tool 45°/90° 3/4" PW
9083-03-xx	Push-On tool 45°/90° Special tools as required

**9028-00-00 H 16 HP**

H 16 HP is a manual, portable crimper with an ergonomic design. The crimper is fast and easy to use. It also has a easy storage of the dies.

Depth: 156 mm  
 Width: 500 mm  
 Height: 330 mm  
 Weight: 29 kg  
 Crimping force: 955 Kn

## ACCESSORIES

Part number	Type
-------------	------

**Dies**

9070-16-10	H 16-10
9070-16-12	H 16-12
9070-16-14	H 16-14
9070-16-16	H 16-16
9070-16-19	H 16-19
9070-16-23	H 16-23
9070-16-27	H 16-27
9070-16-31	H 16-31

## Technical data

Crimping range in mm	10-45
Crimping force in kN	955
Maximum hose size in inch	1"
Die Set	H 16
Maximum travel of dies in mm	20
Master die diameter	39
Master die length mm	64
Machine control	Manual
Motor size in kW	700 Bar

**9028-00-01 H 16 AP**

H 16 AP is our smallest, manual portable crimper with an ergonomic design. The crimper is fast and easy to use. It also has a easy storage of the dies.

Depth: 156 mm  
 Width: 500 mm  
 Height: 330 mm  
 Weight: 31 kg  
 Crimping force: 955 Kn

## ACCESSORIES

Part number	Type
-------------	------

**Dies**

9070-16-10	H 16-10
9070-16-12	H 16-12
9070-16-14	H 16-14
9070-16-16	H 16-16
9070-16-19	H 16-19
9070-16-23	H 16-23
9070-16-27	H 16-27
9070-16-31	H 16-31

## Technical data

Crimping range in mm	10-45
Crimping force in kN	955
Maximum hose size in inch	1"
Die Set	H 30
Maximum travel of dies in mm	20
Master die diameter	39
Master die length mm	64
Machine control	Manual
Motor size in kW	Air pressure

**H 16 P**



H16P is equipped with a two meter hose with quick release fittings and as a power source, you can choose from a hand pump or an air pump. When a service needs to be done on site, H16P is the ideal machine as the weight and size has been reduced to a minimum.

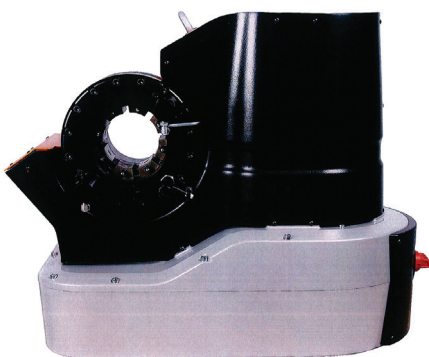
Depth: 180 mm  
 Width: 230 mm  
 Height: 270 mm  
 Weight: 20 kg

ACCESSORIES

Part number	Type
<b>Dies</b>	
9070-16-10	H 16-10
9070-16-12	H 16-12
9070-16-14	H 16-14
9070-16-16	H 16-16
9070-16-19	H 16-19
9070-16-23	H 16-23
9070-16-27	H 16-27
9070-16-31	H 16-31

Technical data	
Crimping range in mm	10-45
Crimping force in kN	955
Maximum hose size in inch	1"
Die Set	H 16
Maximum travel of dies in mm	20
Master die diameter	39
Master die length mm	64
Machine control	Manual
Motor size in kW	700 Bar

**9028-00-02 H 24 D AUTO CAL**



H 24 D AutoCal is an automatic crimper for fast and easy crimping of hoses. The crimper is equipped with digital control for automatic calibration.

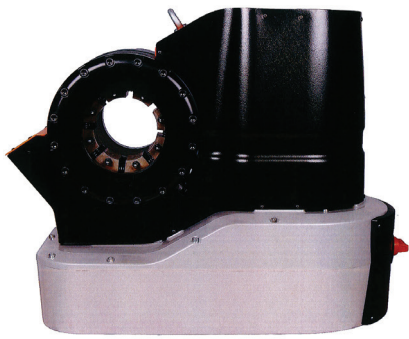
Depth: 400 mm  
 Width: 800 mm  
 Height: 530 mm  
 Weight: 125 kg  
 Crimping force: 1400 Kn

ACCESSORIES

Part number	Type
<b>Dies</b>	
9063-20-10	H 20-10
9063-20-12	H 20-12
9063-20-14	H 20-14
9063-20-16	H 20-16
9063-20-19	H 20-19
9063-20-23	H 20-23
9063-20-27	H 20-27
9063-20-31	H 20-31
9063-20-36	H 20-36
9063-20-41	H 20-41
9063-20-47	H 20-47
9063-20-54	H 20-54

Technical data	
Crimping range in mm	10-61
Crimping force in kN	1400
Maximum hose size in inch	1 1/2"
Die Set	H 24
Maximum travel of dies in mm	25
Master die diameter	84
Master die length mm	80
Machine control	Digital Control with Auto. cal.
Motor size in kW 1 phase	1,5
Motor size in kW 3 phase	3



**9028-00-03 H 32 D AUTOCAL**

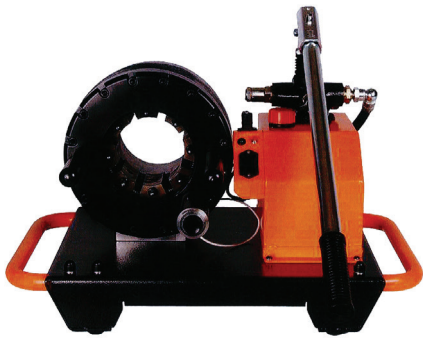
H 32 D AutoCal is an automatic crimper for fast and easy crimping of hoses. The crimper is equipped with digital control for automatic calibration.

Depth: 400 mm  
 Width: 850 mm  
 Height: 530 mm  
 Weight: 173 kg  
 Crimping force: 2000 Kn

## ACCESSORIES

Part number	Type
<b>Dies</b>	
9060-32-10	H 32-10
9060-32-12	H 32-12
9060-32-14	H 32-14
9060-32-16	H 32-16
9060-32-19	H 32-19
9060-32-22	H 32-22
9060-32-26	H 32-26
9060-32-30	H 32-30
9060-32-34	H 32-34
9060-32-39	H 32-39
9060-32-45	H 32-45
9060-32-51	H 32-51
9060-32-57	H 32-57
9060-32-63	H 32-63
9060-32-69	H 32-69
9060-32-74	H 32-74
9060-32-78	H 32-78

Technical data	
Crimping range in mm	10-87
Crimping force in kN	2000
Maximum hose size in inch	2"
Die Set	H 32
Maximum travel of dies in mm	33
Master die diameter	99
Master die length mm	80
Machine control	Digital Control with Auto.cal.
Motor size in kW 1 phase	1,5
Motor size in kW 3 phase	4

**9028-00-10 H 24 HP**

H 24 HP is a manual crimper with a wide range of applications. The press is equipped with a hand pump.

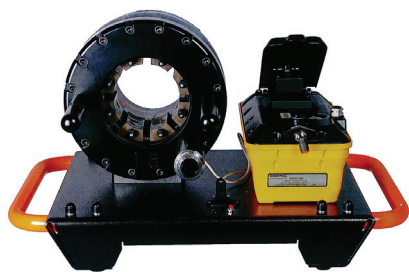
Depth: 400 mm  
 Width: 520 mm  
 Height: 370 mm  
 Weight: 78 kg  
 Crimping force: 1400 Kn

## ACCESSORIES

Part number	Type
<b>Dies</b>	
9063-20-10	H 24-10
9063-20-12	H 24-12
9063-20-14	H 24-14
9063-20-16	H 24-16
9063-20-19	H 24-19
9063-20-23	H 24-23
9063-20-27	H 24-27
9063-20-31	H 24-31
9063-20-36	H 24-36
9063-20-41	H 24-41
9063-20-47	H 24-47
9063-20-54	H 24-54

Technical data	
Crimping range in mm	10-61
Crimping force in kN	1400
Maximum hose size in inch	1 1/2"
Die Set	H 24
Maximum travel of dies in mm	25
Master die diameter	84
Master die length mm	80
Machine control	Manual
Motor size in kW 1 phase	Hand pump
Motor size in kW 3 phase	Hand pump

9028-00-11 H 24 AP



H 24 AP is a manual crimper with a wide range of applications. The machine is driven by compressed air.

Depth: 400 mm  
 Width: 520 mm  
 Height: 370 mm  
 Weight: 80 kg  
 Crimping force: 1400 Kn

ACCESSORIES

Part number	Type
<b>Dies</b>	
9063-20-10	H 24-10
9063-20-12	H 24-12
9063-20-14	H 24-14
9063-20-16	H 24-16
9063-20-19	H 24-19
9063-20-23	H 24-23
9063-20-27	H 24-27
9063-20-31	H 24-31
9063-20-36	H 24-36
9063-20-41	H 24-41
9063-20-47	H 24-47
9063-20-54	H 24-54

Technical data	
Crimping range in mm	10-61
Crimping force in kN	1400
Maximum hose size in inch	1 1/2"
Die Set	H 24
Maximum travel of dies in mm	25
Master die diameter	84
Master die length mm	80
Machine control	Manual
Motor size in kW 1 phase	Air pressure
Motor size in kW 3 phase	Air pressure

9028-00-12/13 H 24 DC 12V/24V



H 24 DC 12V/24V is a battery operated crimper that is excellent for use in vehicles connected to the car battery. This robust crimper can crimp the hose up to 1 1/2 ".

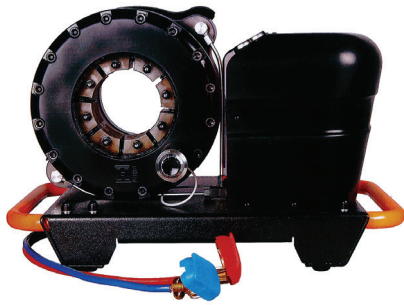
Depth: 400 mm  
 Width: 520 mm  
 Height: 370 mm  
 Weight: 80 kg  
 Crimping force: 1400 Kn

ACCESSORIES

Part number	Type
<b>Dies</b>	
9063-20-10	H 24-10
9063-20-12	H 24-12
9063-20-14	H 24-14
9063-20-16	H 24-16
9063-20-19	H 24-19
9063-20-23	H 24-23
9063-20-27	H 24-27
9063-20-31	H 24-31
9063-20-36	H 24-36
9063-20-41	H 24-41
9063-20-47	H 24-47
9063-20-54	H 24-54

Technical data	
Crimping range in mm	10-61
Crimping force in kN	1400
Maximum hose size in inch	1 1/2"
Die Set	H 24
Maximum travel of dies in mm	25
Master die diameter	84
Master die length mm	80
Machine control	Micrometer Screw
Motor size in kW	1,6 kW / 2,2 kW

## 9028-00-15/16 H 32 DC 12V/24V



H 32 DC 12V/24V is a very versatile crimper available in; 12V/16,6 kW or 24V/2,2 kW.

Depth: 420 mm  
 Depth: 540 mm  
 Height: 400 mm  
 Weight: 115 kg  
 Crimping force: 2000 Kn

## ACCESSORIES

Part number	Type
<b>Pressbackar</b>	
9060-32-10	H 32-10
9060-32-12	H 32-12
9060-32-14	H 32-14
9060-32-16	H 32-16
9060-32-19	H 32-19
9060-32-22	H 32-22
9060-32-26	H 32-26
9060-32-30	H 32-30
9060-32-34	H 32-34
9060-32-39	H 32-39
9060-32-45	H 32-45
9060-32-51	H 32-51
9060-32-57	H 32-57
9060-32-63	H 32-63
9060-32-69	H 32-69
9060-32-74	H 32-74
9060-32-78	H 32-78

Technical data	
Crimping range in mm	10-87
Crimping force in kN	2000
Maximum hose size in inch	2"
Die Set	H 32
Maximum travel of dies in mm	33
Master die diameter	99
Master die length mm	80
Machine control	Micrometer Screw
Motor size in kW 1 phase	1,6
Motor size in kW 3 phase	2,2

## 9028-00-18 H120TS



H 20 TS is a powerful crimper with touch screen, automatic ferrule control and automatic calibration. This press gives you more opportunities and it's the right choice for hose production in workshops.

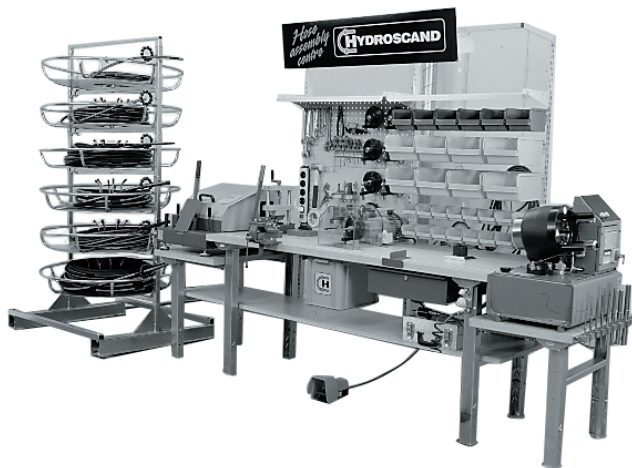
Depth: 800 mm  
 Bredd: 920 mm  
 Height: 1500 mm  
 Crimping force: 2800 Kn

## ACCESSORIES

Part number	Type
<b>Dies</b>	
9060-32-10	H 32-10
9060-32-12	H 32-12
9060-32-14	H 32-14
9060-32-16	H 32-16
9060-32-19	H 32-19
9060-32-22	H 32-22
9060-32-26	H 32-26
9060-32-30	H 32-30
9060-32-34	H 32-34
9060-32-39	H 32-39
9060-32-45	H 32-45
9060-32-51	H 32-51
9060-32-57	H 32-57
9060-32-63	H 32-63
9060-32-69	H 32-69
9060-32-74	H 32-74
9060-32-78	H 32-78

Technical data	
Crimping range in mm	10-87
Crimping force in kN	2800
Maximum hose size in inch	2"
Die Set	H 32
Maximum travel of dies in mm	70
Master die diameter	99
Master die length mm	97
Machine control	Advanced Touch Screen Control
Motor size in kW	5,5

**9081 HAC P20/P32 COMPLETE WORKBENCH**



A workbench for all needs. The Hose Assembly Centre, the complete hose assembling workshop, is equipped with everything needed for a safe and professional hose assembly. It can be delivered with hose reel, cutting machine, skiving machine, swage marking machine, cleaning equipment and necessary accessories.

**Part number Type**

9081-20-00 HAC P20MS complete workbench  
**Assembly equipment for 1/4"- 1 1/4" 4200-series consist of:**  
 Hose reel (HoseReel 7), cutting machine (MidiCut 5-50), marking system (MarkMan II), skiving machine (MidiSkive 5-50), crimper (P20 MS) with 11 pcs. of dies and a stand, blow cleaning (MicroJet 5-50), cleaning set for hoses (MiniJet, complete) and a workbench.

**Part number Type**

9081-32-00 HAC P32MS complete workbench  
**Assembly equipment for 1/4"- 2" 4200- and 4400-series consist of:**  
 Hose reel (HoseReel 7), cutting machine (MaxiCut 5-50), marking system (MarkMan II), skiving machine (MidiSkive 5-50), crimper (P32 MS) with 15 pcs. of dies, QC-stand, blow cleaning (MicroJet 5-50), cleaning set for hoses (E-Cleaner, complete) and a workbench.

**9070 DIES FOR H 16**



**Part number Type**

9070-16-06 Dies no. 1 P 16-06  
 9070-16-07 Dies no. 1 P 16-07  
 9070-16-10 Dies no. 1 P 16-10  
 9070-16-12 Dies no. 2 P 16-12  
 9070-16-14 Dies no. 3 P 16-14  
 9070-16-16 Dies no. 4 P 16-16  
 9070-16-19 Dies no. 5 P 16-19  
 9070-16-23 Dies no. 6 P 16-23  
 9070-16-27 Dies no. 7 P 16-27  
 9070-16-31 Dies no. 8 P 16-31

**9063 DIES FOR H 20**



**Part number Type**

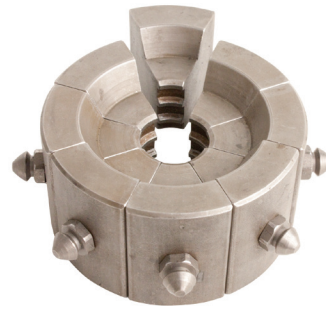
9063-20-06 Dies no. 1 P 20-06  
 9063-20-07 Dies no. 1 P 20-07  
 9063-20-10 Dies no. 1 P 20-10  
 9063-20-12 Dies no. 2 P 20-12  
 9063-20-14 Dies no. 3 P 20-14  
 9063-20-16 Dies no. 4 P 20-16  
 9063-20-19 Dies no. 5 P 20-19  
 9063-20-23 Dies no. 7 P 20-27  
 9063-20-31 Dies no. 8 P 20-31  
 9063-20-36 Dies no. 9 P 20-36  
 9063-20-41 Dies no. 10 P 20-41  
 9063-20-47 Dies no. 11 P 20-47  
 9063-20-54 Dies no. 12 P 20-54

**9060 DIES FOR H 32**



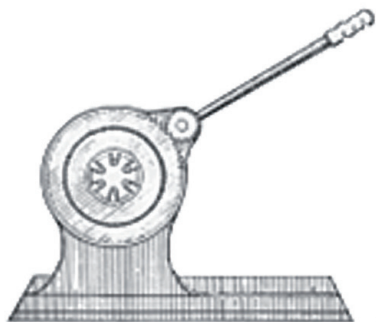
Part number	Type
9060-32-071	Dies no. 1 P 32-7,1
9060-32-10	Dies no. 1 P 32-10
9060-32-12	Dies no. 2 P 32-12
9060-32-14	Dies no. 3 P 32-14
9060-32-16	Dies no. 4 P 32-16
9060-32-19	Dies no. 5 P 32-19
9060-32-22	Dies no. 6 P 32-22
9060-32-26	Dies no. 7 P 32-26
9060-32-30	Dies no. 8 P 32-30
9060-32-34	Dies no. 9 P 32-34
9060-32-39	Dies no. 10 P 32-39
9060-32-45	Dies no. 11 P 32-45
9060-32-51	Dies no. 12 P 32-51
9060-32-57	Dies no. 13 P 32-57
9060-32-63	Dies no. 14 P 32-63
9060-32-69	Dies no. 15 P 32-69
9060-32-74	Dies no. 16 P 32-74
9060-32-78	Dies no. 17 P 32-78

**9063 DIES FOR P 20/32**



Part number	Type
9063-20-18T	AC Dies P 20-18,2
9063-20-21T	AC Dies P 20-21,4
9063-20-23T	AC Dies P 20-23,6
9060-32-18T	AC Dies P 32-18,2
9060-32-21T	AC Dies P 32-21,4
9060-32-23T	AC Dies P 32-23,6

**9025-02 PRESSMAN 9-28**



A manual swaging tool mounted in a vice. PressMan is very easy to handle and is suitable for low pressure hoses.

Length: 1300 mm  
 Width: 350 mm  
 Height: 630 mm  
 Weight: 17 kg

Part number	Type
9025-02-01	PressMan 9-28, swaging tool for low pressure hose 9-28 mm

**9004 HOSEREEL 1**



HoseReel 1  
 Length: 1200 mm  
 Width: 1200 mm  
 Height: 830 mm  
 Weight: 40 kg

Part number	Type
9004-00-03	HoseReel 1, hose reel

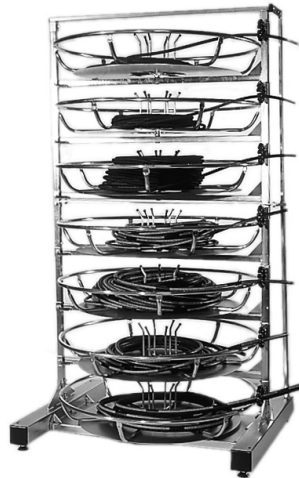
9004 HOSEREEL 6 / HOSEREEL 7

Hose reel for six or seven hoses. HoseReel 6 and 7 saves a lot of time since it keeps the most common hoses available. HoseReel 6 or 7 can be used for hoses of dimensions from 3/16" - 1 1/4". All baskets (except the bottom one) can be swung outward horizontally in order to easily put the hose in place.

Part number	Type
9004-00-08	HoseReel 6, hose reel
9004-01-21	Wheel kit for HoseReel 6
9004-00-07	HoseReel 7, hose reel
9004-01-21	Wheel kit for HoseReel 7



**HoseReel 6**  
 Length: 1170 mm  
 Width: 1000 mm  
 Height: 2000 mm  
 Weight: 140 kg  
 ID: 250 mm  
 OD: 900 mm



**HoseReel 7**  
 Length: 1270 mm  
 Width: 1000 mm  
 Height: 2230 mm  
 Weight: 148 kg  
 ID: 250 mm  
 OD: 1010 mm

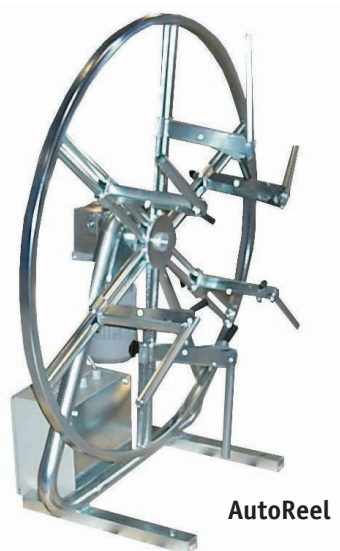
9004 AUTOREEL V / AUTOREEL H

Motorized hose reels with step-less speed control for easy hose reeling. Ideal for long hoses. Can be combined with HoseReel 1 for simplified handling.

AutoReel V is suitable for hoses of dimension 1/8" to 1 1/4".  
 AutoReel H is suitable for hoses of dimension 1/8" to 2".



**AutoReel V**



**AutoReel H**

**AutoReel V**  
 Length: 1200 mm  
 Width: 600 mm  
 Height: 1400 mm  
 Weight: 75 kg  
 ID adjustable: 250-800 mm

**AutoReel H**  
 Length: 1200 mm  
 Width: 1200 mm  
 Height: 830 mm  
 Weight: 65 kg  
 ID adjustable: 150-500 mm

Part number	Type	
9004-02-03	AutoReel V, hose reel 230V 50Hz	3-phase
9004-01-03	AutoReel H, hose reel 230V 50Hz	3-phase

### 9013/14/15 SWAGING MANDRELS



In order to control that the swaging has resulted in the correct internal collapse, use Hydroscand's swaging mandrels. The GO-side should pass through the fitting to ensure that the swaging is not overdone, while the STOP-side should stop in the middle of the tail to insure that the swaging is sufficient.

Part number	Hose dim.	Type
9013-00-04	1/4"	Swaging mandrels IL/4400-series
9013-00-06	3/8"	Swaging mandrels IL/4400-series
9013-00-08	1/2"	Swaging mandrels IL/4400-series
9013-00-10	5/8"	Swaging mandrels IL/4400-series
9013-00-12	3/4"	Swaging mandrels IL/4400-series
9013-00-16	1"	Swaging mandrels IL/4400-series
9013-00-20	1 1/4"	Swaging mandrels IL/4400-series
9013-00-24	1 1/2"	Swaging mandrels IL/4400-series
9013-00-32	2"	Swaging mandrels IL/4400-series

Part number	Hose dim.	Type
9015-03-05	3/16"-5/16"	Swaging mandrels 4200-series
9015-00-04	1/4"	Swaging mandrels 4200-series
9015-00-06	3/8"	Swaging mandrels 4200-series
9015-00-08	1/2"	Swaging mandrels 4200-series
9015-00-10	5/8"	Swaging mandrels 4200-series
9015-00-12	3/4"	Swaging mandrels 4200-series
9015-00-16	1"	Swaging mandrels 4200-series
9015-00-20	1 1/4"	Swaging mandrels 4200-series
9015-00-24	1 1/2"	Swaging mandrels 4200-series
9015-00-32	2"	Swaging mandrels 4200-series

### 9031 MARKMAN II MARKING MACHINE



9031-10-02

9031-10-01

Manual or pneumatic machine for marking ferrules (before swaging). The marking machine can be used on all hose ferrules with dimensions from 3/16" up to 2". The type holder can be provided with 2 or 3 text rows, alternatively with a complete 8-digit marking wheel.

	9031-10-01	9031-10-02
Length:	500 mm	500 mm
Width:	200 mm	380 mm
Height:	500 mm	500 mm
Weight:	28 kg	35 kg

Part number	Type
9031-10-01	MarkMan II-M, manual marking machine excl. types/holders
9031-10-02	MarkMan II-P, pneumatic marking machine excl. types/QC-adaptor

ACCESSORIES

Part number	Type
9031-10-03	Type holder 2 (2 rows, 4 mm)
9031-10-04	Type holder 3 (3 rows, 4 mm)
9031-11-03	Type holder 2 (2 rows, 3 mm)
9031-11-04	Type holder 3 (3 rows, 3 mm)
9031-10-07	Type holder special (2-3 rows, special) according to customer's request
9031-10-05	QC-adaptor for type holder HSAM 4
9031-00-04	Case kit 4 mm with types, suitable for 9031-10-03/04
9031-12-04	Case kit 3 mm with types, suitable for 9031-11-03/04
9031-00-06	Marking wheel AM 4-8 wheels
9031-10-06	QC-adaptor for marking wheel AM 4-8 wheels

**9031 AUTOFEED 15-80**

---

AutoFeed 15-80 is a PLC-controlled automatic marking system for ferrules, suitable for ferrules from 15 mm to 80 mm OD. Using this will radically reduce your marking time. This system can only be used in combination with our pneumatic version of MarkMan 5-50 M/P (see technical specification, MarkMan 5-50 M/P).

Length: 600 mm  
Width: 1300 mm  
Height: 900 mm  
Weight: 50 kg

Part number	Type
9031-10-10	AutoFeed 15-80



## 9035 E-CLEANER MINI



For quick and simple cleaning of all sorts of hoses and pipes. The system uses a foam rubber plug which is pushed with compressed air through the hose/the pipe. Nozzles are available for hoses with dimensions from 3/16" to 1", and for pipes with dimensions from 6 mm to 30 mm. Purity class ISO 20117.



Part number	Type
-------------	------

### E-Cleaner mini

9035-00-00	E-Cleaner mini 4030 complete case with 9 optional hose nozzles
9035-00-01	E-Cleaner mini 4060 complete case with 9 optional hose nozzles

### Nozzles, hoses

9035-02-03	E-Cleaner mini hose nozzle 3/16"
9035-02-04	E-Cleaner mini hose nozzle 1/4"
9035-02-05	E-Cleaner mini hose nozzle 5/16"
9035-02-06	E-Cleaner mini hose nozzle 3/8"
9035-02-08	E-Cleaner mini hose nozzle 1/2"
9035-02-10	E-Cleaner mini hose nozzle 5/8"
9035-02-12	E-Cleaner mini hose nozzle 3/4"
9035-02-16	E-Cleaner mini hose nozzle 1"



### Nozzles, pipes

9035-06-03	E-Cleaner mini pipe nozzle 6x1,5
9035-06-04	E-Cleaner mini pipe nozzle 6x1
9035-08-05	E-Cleaner mini pipe nozzle 8x1,5
9035-10-05	E-Cleaner mini pipe nozzle 10x2,5
9035-10-07	E-Cleaner mini pipe nozzle 10x1,5
9035-12-06	E-Cleaner mini pipe nozzle 12x3
9035-12-08	E-Cleaner mini pipe nozzle 12x2
9035-12-09	E-Cleaner mini pipe nozzle 12x1,5
9035-14-09	E-Cleaner mini pipe nozzle 14x2,5
9035-15-11	E-Cleaner mini pipe nozzle 15x2
9035-15-12	E-Cleaner mini pipe nozzle 15x1,5
9035-16-10	E-Cleaner mini pipe nozzle 16x3
9035-16-12	E-Cleaner mini pipe nozzle 16x2
9035-18-14	E-Cleaner mini pipe nozzle 18x2
9035-18-15	E-Cleaner mini pipe nozzle 18x1,5
9035-20-12	E-Cleaner mini pipe nozzle 20x4
9035-20-14	E-Cleaner mini pipe nozzle 20x3
9035-20-16	E-Cleaner mini pipe nozzle 20x2
9035-22-16	E-Cleaner mini pipe nozzle 22x3
9035-22-18	E-Cleaner mini pipe nozzle 22x2
9035-22-19	E-Cleaner mini pipe nozzle 22x1,5
9035-25-15	E-Cleaner mini pipe nozzle 25x5
9035-25-19	E-Cleaner mini pipe nozzle 25x3
9035-28-22	E-Cleaner mini pipe nozzle 28x3
9035-28-24	E-Cleaner mini pipe nozzle 28x2
9035-30-20	E-Cleaner mini pipe nozzle 30x5
9035-30-24	E-Cleaner mini pipe nozzle 30x3
9035-xx-xx	E-Cleaner pipe nozzle. mini, special dimension



9033 E-CLEANER MAXI



For quick and simple cleaning of all sorts of hoses and pipes. The system uses a foam rubber plug which is pushed with compressed air through the hose/the pipe. Nozzles are available for hoses with dimensions from 3/16" to 2", and for pipes with dimensions from 4 mm to 60 mm. Purity class ISO 20117.

**Part number      Type**

**E-Cleaner maxi**

- 9033-00-00 E-Cleaner maxi 2030 complete case with 9 optional hose nozzles
- 9033-00-01 E-Cleaner maxi 2010 pistol excl. nozzle
- 9033-00-25 Table stand 2050
- 9034-00-00 E-Cleaner maxi 2060 complete case with 11 optional pipe nozzles

**Nozzles, hoses**

- 9033-02-03 E-Cleaner maxi hose nozzle 3/16"
- 9033-02-04 E-Cleaner maxi hose nozzle 1/4"
- 9033-02-05 E-Cleaner maxi hose nozzle 5/16"
- 9033-02-06 E-Cleaner maxi hose nozzle 3/8"
- 9033-02-08 E-Cleaner maxi hose nozzle 1/2"
- 9033-02-10 E-Cleaner maxi hose nozzle 5/8"
- 9033-02-12 E-Cleaner maxi hose nozzle 3/4"
- 9033-02-16 E-Cleaner maxi hose nozzle 1"
- 9033-02-20 E-Cleaner maxi hose nozzle 1 1/4"
- 9033-02-24 E-Cleaner maxi hose nozzle 1 1/2"
- 9033-02-32 E-Cleaner maxi hose nozzle 2"

**Nozzles, pipes**

- 9033-03-00 E-Cleaner 3000 Adapter ring for pipe nozzles up to 38 mm.
- 9034-04-03 E-Cleaner maxi pipe nozzle 4x0,75 special
- 9034-05-03 E-Cleaner maxi pipe nozzle 5x1
- 9034-06-02 E-Cleaner maxi pipe nozzle 6x2
- 9034-06-03 E-Cleaner maxi pipe nozzle 6x1,5
- 9034-06-04 E-Cleaner maxi pipe nozzle 6x1
- 9034-08-05 E-Cleaner maxi pipe nozzle 8x1,5
- 9034-08-06 E-Cleaner maxi pipe nozzle 8x2,5
- 9034-10-05 E-Cleaner maxi pipe nozzle 10x2,5
- 9034-10-07 E-Cleaner maxi pipe nozzle 10x1,5
- 9034-12-06 E-Cleaner maxi pipe nozzle 12x3
- 9034-12-08 E-Cleaner maxi pipe nozzle 12x2
- 9034-12-09 E-Cleaner maxi pipe nozzle 12x1,5
- 9034-14-07 E-Cleaner maxi pipe nozzle 14x3,5
- 9034-14-09 E-Cleaner maxi pipe nozzle 14x2,5
- 9034-15-11 E-Cleaner maxi pipe nozzle 15x2
- 9034-16-10 E-Cleaner maxi pipe nozzle 16x3
- 9034-16-12 E-Cleaner maxi pipe nozzle 16x2
- 9034-18-13 E-Cleaner maxi pipe nozzle 18x2,5
- 9034-18-14 E-Cleaner maxi pipe nozzle 18x2
- 9034-18-15 E-Cleaner maxi pipe nozzle 18x1,5
- 9034-20-12 E-Cleaner maxi pipe nozzle 20x4
- 9034-20-14 E-Cleaner maxi pipe nozzle 20x3
- 9034-22-16 E-Cleaner maxi pipe nozzle 22x3
- 9034-22-18 E-Cleaner maxi pipe nozzle 22x2
- 9034-25-15 E-Cleaner maxi pipe nozzle 25x5
- 9034-25-19 E-Cleaner maxi pipe nozzle 25x3
- 9034-28-18 E-Cleaner maxi pipe nozzle 28x5
- 9034-28-22 E-Cleaner maxi pipe nozzle 28x3
- 9034-28-24 E-Cleaner maxi pipe nozzle 28x2
- 9034-30-20 E-Cleaner maxi pipe nozzle 30x5
- 9034-30-24 E-Cleaner maxi pipe nozzle 30x3
- 9034-35-29 E-Cleaner maxi pipe nozzle 35x3
- 9034-35-31 E-Cleaner maxi pipe nozzle 35x2

- 9034-38-28 E-Cleaner maxi pipe nozzle 38x5
- 9034-38-30 E-Cleaner maxi pipe nozzle 38x4
- 9034-38-32 E-Cleaner maxi pipe nozzle 38x3
- 9034-42-34 E-Cleaner maxi pipe nozzle 42x4
- 9034-42-36 E-Cleaner maxi pipe nozzle 42x3
- 9034-42-38 E-Cleaner maxi pipe nozzle 42x2
- 9034-50-38 E-Cleaner maxi pipe nozzle 50x6
- 9034-50-40 E-Cleaner maxi pipe nozzle 50x5
- 9034-50-44 E-Cleaner maxi pipe nozzle 50x3
- 9034-60-50 E-Cleaner maxi pipe nozzle 60x50
- 9034-xx-xx E-Cleaner maxi pipe nozzle, special max. 60 mm.



9034 E-CLEANER COBRA



Cobra hose set



Cobra pipe set



Pistol



Part number Type

**E-Cleaner system Cobra**

9034-90-00 E-Cleaner Cobra, semi-automatic pistol for 3/16" - 2"

**Nozzles, hoses**

9034-90-03 E-Cleaner Cobra hose nozzle 3/16"  
 9034-90-04 E-Cleaner Cobra hose nozzle 1/4"  
 9034-90-05 E-Cleaner Cobra hose nozzle 5/16"  
 9034-90-06 E-Cleaner Cobra hose nozzle 3/8"  
 9034-90-08 E-Cleaner Cobra hose nozzle 1/2"  
 9034-90-10 E-Cleaner Cobra hose nozzle 5/8"  
 9034-90-12 E-Cleaner Cobra hose nozzle 3/4"  
 9034-90-16 E-Cleaner Cobra hose nozzle 1"  
 9034-90-20 E-Cleaner Cobra hose nozzle 1 1/4"  
 9034-90-24 E-Cleaner Cobra hose nozzle 1 1/2"  
 9034-90-32 E-Cleaner Cobra hose nozzle 2"

**E-Cleaner system 2000 SA**

9034-92-00 E-Cleaner 2000 SA, semi-automatic machine for 3/16" - 2"

**Nozzles, hoses**

9033-02-03 E-Cleaner 2000 SA hose nozzle 3/16"  
 9033-02-04 E-Cleaner 2000 SA hose nozzle 1/4"  
 9033-02-05 E-Cleaner 2000 SA hose nozzle 5/16"  
 9033-02-06 E-Cleaner 2000 SA hose nozzle 3/8"  
 9033-02-08 E-Cleaner 2000 SA hose nozzle 1/2"  
 9033-02-10 E-Cleaner 2000 SA hose nozzle 5/8"  
 9033-02-12 E-Cleaner 2000 SA hose nozzle 3/4"  
 9033-02-16 E-Cleaner 2000 SA hose nozzle 1"  
 9033-02-20 E-Cleaner 2000 SA hose nozzle 1 1/4"  
 9033-02-24 E-Cleaner 2000 SA hose nozzle 1 1/2"  
 9033-02-32 E-Cleaner 2000 SA hose nozzle 2"

**E-Cleaner system BIG BANG for pipes**

9034-94-00 E-Cleaner system BIG BANG for 2 1/2" - 6" pipes  
 pipe nozzles on request

**Nozzles, pipes**

9036-06-03 Cobra pipe nozzle 6x1,5  
 9036-06-04 Cobra pipe nozzle 6x1  
 9036-08-05 Cobra pipe nozzle 8x1,5  
 9036-08-06 Cobra pipe nozzle 8x1  
 9036-10-05 Cobra pipe nozzle 10x2,5  
 9036-10-06 Cobra pipe nozzle 10x2  
 9036-10-07 Cobra pipe nozzle 10x1,5  
 9036-10-08 Cobra pipe nozzle 10x1  
 9036-12-06 Cobra pipe nozzle 12x3  
 9036-12-08 Cobra pipe nozzle 12x2  
 9036-12-09 Cobra pipe nozzle 12x1,5  
 9036-14-09 Cobra pipe nozzle 14x2,5

9036-14-10 Cobra pipe nozzle 14x2  
 9036-15-09 Cobra pipe nozzle 15x3  
 9036-15-11 Cobra pipe nozzle 15x2  
 9036-15-12 Cobra pipe nozzle 15x1,5  
 9036-15-13 Cobra pipe nozzle 15x1  
 9036-16-10 Cobra pipe nozzle 16x3  
 9036-16-11 Cobra pipe nozzle 16x2,5  
 9036-16-12 Cobra pipe nozzle 16x2  
 9036-16-13 Cobra pipe nozzle 16x1,5  
 9036-18-12 Cobra pipe nozzle 18x3  
 9036-18-14 Cobra pipe nozzle 18x2  
 9036-18-15 Cobra pipe nozzle 18x1,5  
 9036-20-12 Cobra pipe nozzle 20x4  
 9036-20-14 Cobra pipe nozzle 20x3  
 9036-20-15 Cobra pipe nozzle 20x2,5  
 9036-20-16 Cobra pipe nozzle 20x2  
 9036-20-18 Cobra pipe nozzle 20x1  
 9036-22-16 Cobra pipe nozzle 22x3  
 9036-22-18 Cobra pipe nozzle 22x2  
 9036-22-19 Cobra pipe nozzle 22x1,5  
 9036-25-15 Cobra pipe nozzle 25x5  
 9036-25-17 Cobra pipe nozzle 25x4  
 9036-25-19 Cobra pipe nozzle 25x3  
 9036-25-20 Cobra pipe nozzle 25x2,5  
 9036-25-22 Cobra pipe nozzle 25x1,5  
 9036-28-22 Cobra pipe nozzle 28x3  
 9036-28-24 Cobra pipe nozzle 28x2  
 9036-30-20 Cobra pipe nozzle 30x5  
 9036-30-22 Cobra pipe nozzle 30x4  
 9036-30-24 Cobra pipe nozzle 30x3  
 9036-30-25 Cobra pipe nozzle 30x2,5  
 9036-30-26 Cobra pipe nozzle 30x2  
 9036-35-25 Cobra pipe nozzle 35x5  
 9036-35-27 Cobra pipe nozzle 35x4  
 9036-35-29 Cobra pipe nozzle 35x3  
 9036-35-30 Cobra pipe nozzle 35x2,5  
 9036-35-31 Cobra pipe nozzle 35x2  
 9036-38-26 Cobra pipe nozzle 38x6  
 9036-38-28 Cobra pipe nozzle 38x5  
 9036-38-30 Cobra pipe nozzle 38x4  
 9036-38-32 Cobra pipe nozzle 38x3  
 9036-38-33 Cobra pipe nozzle 38x2,5  
 9036-42-32 Cobra pipe nozzle 42x5  
 9036-42-34 Cobra pipe nozzle 42x4  
 9036-42-36 Cobra pipe nozzle 42x3  
 9036-42-38 Cobra pipe nozzle 42x2  
 9036-50-38 Cobra pipe nozzle 50x6  
 9036-50-40 Cobra pipe nozzle 50x5  
 9036-50-44 Cobra pipe nozzle 50x3  
 9036-60-50 Cobra pipe nozzle 60x5  
 9036-60-54 Cobra pipe nozzle 60x3

## 9032 E-CLEANER PLUGS



Part number	Type	Dim.	Pack.
-------------	------	------	-------

**Plug, hoses**

9032-02-03	E-Cleaner plug for hose dim.	3/16"	300
9032-02-04	E-Cleaner plug for hose dim.	1/4"	300
9032-02-05	E-Cleaner plug for hose dim.	5/16"	300
9032-02-06	E-Cleaner plug for hose dim.	3/8"	300
9032-02-08	E-Cleaner plug for hose dim.	1/2"	300
9032-02-10	E-Cleaner plug for hose dim.	5/8"	100
9032-02-12	E-Cleaner plug for hose dim.	3/4"	100
9032-02-16	E-Cleaner plug for hose dim.	1"	100
9032-02-20	E-Cleaner plug for hose dim.	1 1/4"	50
9032-02-24	E-Cleaner plug for hose dim.	1 1/2"	50
9032-02-32	E-Cleaner plug for hose dim.	2"	50

**Plug, pipes**

9032-01-04	E-Cleaner plug for pipes int. dim.	3mm	300
9032-01-05	E-Cleaner plug for pipes int. dim.	4mm	300
9032-01-07	E-Cleaner plug for pipes int. dim.	5mm	300
9032-01-08	E-Cleaner plug for pipes int. dim.	6mm	300
9032-01-09	E-Cleaner plug for pipes int. dim.	7mm	300
9032-01-10	E-Cleaner plug for pipes int. dim.	8mm	300
9032-01-12	E-Cleaner plug for pipes int. dim.	9mm	300
9032-01-14	E-Cleaner plug for pipes int. dim.	10-11mm	300
9032-01-16	E-Cleaner plug for pipes int. dim.	12mm	300
9032-01-18	E-Cleaner plug for pipes int. dim.	13-14mm	300
9032-01-20	E-Cleaner plug for pipes int. dim.	15mm	300
9032-01-22	E-Cleaner plug for pipes int. dim.	16-17mm	100
9032-01-25	E-Cleaner plug for pipes int. dim.	18mm	100
9032-01-26	E-Cleaner plug for pipes int. dim.	19mm	100
9032-01-28	E-Cleaner plug for pipes int. dim.	20-21mm	100
9032-01-30	E-Cleaner plug for pipes int. dim.	22-23mm	100
9032-01-33	E-Cleaner plug for pipes int. dim.	24-25mm	100
9032-01-35	E-Cleaner plug for pipes int. dim.	26-27mm	50
9032-01-38	E-Cleaner plug for pipes int. dim.	28mm	50
9032-01-40	E-Cleaner plug for pipes int. dim.	29-31mm	50
9032-01-45	E-Cleaner plug for pipes int. dim.	32-35mm	50
9032-01-48	E-Cleaner plug for pipes int. dim.	34-37mm	50
9032-01-50	E-Cleaner plug for pipes int. dim.	36-40mm	50
9032-01-55	E-Cleaner plug for pipes int. dim.	41-45mm	50
9032-01-60	E-Cleaner plug for pipes int. dim.	46-50mm	50
9032-01-65	E-Cleaner plug for pipes int. dim.	51-55mm	50
9032-01-70	E-Cleaner plug for pipes int. dim.	55-60 mm	25
9032-01-80	E-Cleaner plug for pipes int. dim.	66-70 mm	25
9032-01-85	E-Cleaner plug for pipes int. dim.	71-75 mm	25
9032-01-90	E-Cleaner plug for pipes int. dim.	76-80 mm	10
9032-01-95	E-Cleaner plug for pipes int. dim.	81-84 mm	10
9032-01-100	E-Cleaner plug for pipes int. dim.	85-87 mm	10

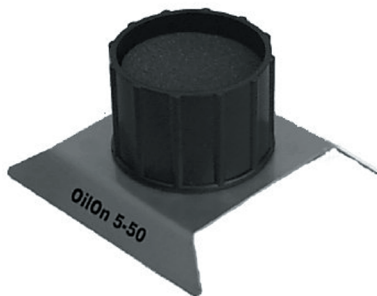
## 9087 MAXICLEAN 5-32



A PLC controlled cleaning machine for pipes and hoses with dimensions from 3/16" to 1 1/4". The machine is extremely easy to use. The hose or the pipe is cleaned with a water-based fluid in a temperature between +55°C - +70°C in order to achieve a pureness level equivalent to ISO 16/12.

Part number	Type
9087-00-00	MaxiClean 5-32, PLC controlled cleaning machine for 1 hose/pipe at a time
9087-02-00	MaxiClean 5-32, PLC controlled cleaning machine for 2 hoses/pipes at a time

## 9081 OILON 5-50

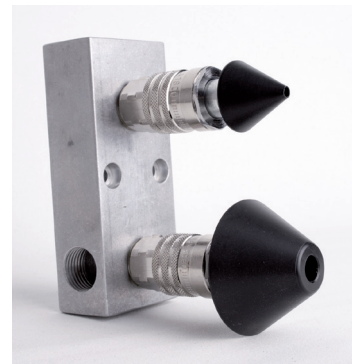


A perfect tool for lubrication of hose fittings before assembly.

Length:	170 mm
Width:	170 mm
Height:	70 mm
Weight:	0,2 kg

Part number	Type
9081-01-14	OilOn 5-50 steel/plastic

## 9036 MICROJET 5-50

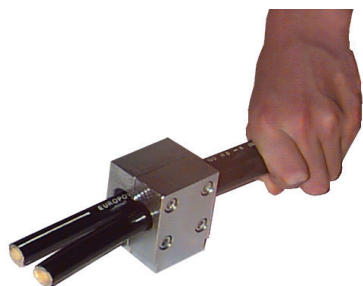


A quick and simple system using compressed air to clean your hose/tube, from 3/16" to 2".

Length:	120 mm
Width:	50 mm
Height:	100 mm
Weight:	0,3 kg
Connection:	R 1/2" F

Part number	Type
9036-01-00	MicroJet 5-50 complete
9036-00-01	Spare nozzle ø30mm
9036-00-02	Spare nozzle ø55mm

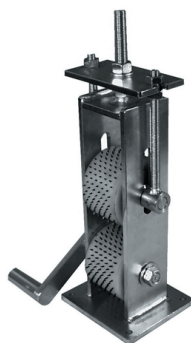
**9023 TWINCUT**



A tool for easy separation of twin hoses.

Part number	Type
9023-00-04	TwinCut for 1/4" hose
9023-00-05	TwinCut for 5/16" hose
9023-00-06	TwinCut for 3/8" hose
9023-00-08	TwinCut for 1/2" hose

**9017 PINPRICKING**

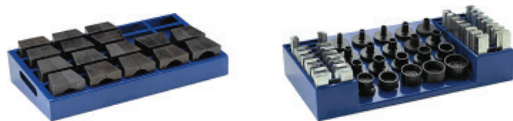


A compact pricking tool for pricking gas hoses.

Length: 170 mm  
 Width: 160 mm  
 Height: 410 mm  
 Weight: 12 kg

Part number	Type
9017-00-00	PinPricking tool

## 9078 US-FL/01 PRE-ASSEMBLY MACHINE/JIC MACHINE 230V/400V



Hydroscand has a complete range of JIC machines.

Length: 430 mm  
 Width: 600 mm  
 Height: 270 mm  
 Weight: 58 kg

Part number	Type
-------------	------

### US-FL/01 Pre-assembly machine/JIC machine

9078-77-00	US-FL/01 400V 50Hz 3-phase, excl. tools
9078-77-03	US-FL/01 230V 50Hz 1-phase, excl. tools

### ACCESSORIES

Part number	Type
-------------	------

9078-77-01	Tool JIC 37°	9078-77-06	24° pre-assembly tool 6L mm
9078-77-06D	JIC 37° dies kit 6 mm	9078-77-06S	24° pre-assembly tool 6S mm
9078-77-08D	JIC 37° dies kit 8 mm	9078-77-08	24° pre-assembly tool 8L mm
9078-77-10D	JIC 37° dies kit 10 mm	9078-77-08S	24° pre-assembly tool 8S mm
9078-77-12D	JIC 37° dies kit 12 mm	9078-77-10	24° pre-assembly tool 10L mm
9078-77-14D	JIC 37° dies kit 14 mm	9078-77-10S	24° pre-assembly tool 10S mm
9078-77-15D	JIC 37° dies kit 15 mm	9078-77-12	24° pre-assembly tool 12L mm
9078-77-16D	JIC 37° dies kit 16 mm	9078-77-12S	24° pre-assembly tool 12S mm
9078-77-18D	JIC 37° dies kit 18 mm	9078-77-14	24° pre-assembly tool 14 mm
9078-77-20D	JIC 37° dies kit 20 mm	9078-77-15	24° pre-assembly tool 15 mm
9078-77-22D	JIC 37° dies kit 22 mm	9078-77-16	24° pre-assembly tool 16 mm
9078-77-25D	JIC 37° dies kit 25 mm	9078-77-18	24° pre-assembly tool 18 mm
9078-77-28D	JIC 37° dies kit 28 mm	9078-77-20	24° pre-assembly tool 20 mm
9078-77-30D	JIC 37° dies kit 30 mm	9078-77-22	24° pre-assembly tool 22 mm
9078-77-35D	JIC 37° dies kit 35 mm	9078-77-25	24° pre-assembly tool 25 mm
9078-77-38D	JIC 37° dies kit 38 mm	9078-77-28	24° pre-assembly tool 28 mm
9078-77-42D	JIC 37° dies kit 42 mm	9078-77-30	24° pre-assembly tool 30 mm
9078-78-06	24° U-holder 6mm	9078-77-35	24° pre-assembly tool 35 mm
9078-78-08	24° U-holder 8 mm	9078-77-38	24° pre-assembly tool 38 mm
9078-78-10	24° U-holder 10 mm	9078-77-42	24° pre-assembly tool 42 mm
9078-78-12	24° U-holder 12 mm		
9078-78-14	24° U-holder 14 mm		
9078-78-15	24° U-holder 15 mm		
9078-78-16	24° U-holder 16 mm		
9078-78-18	24° U-holder 18 mm		
9078-78-20	24° U-holder 20 mm		
9078-78-22	24° U-holder 22 mm		
9078-78-25	24° U-holder 25 mm		
9078-78-28	24° U-holder 28 mm		
9078-78-30	24° U-holder 30 mm		
9078-78-35	24° U-holder 35 mm		
9078-78-38	24° U-holder 38 mm		
9078-78-42	24° U-holder 42 mm		

**9040 MEGA BENDER VS76**



Part number	Type
9040-01-30	Mega Bender 030 pipe bending machine max capacity 70 x 4 mm 230V 1-phase 50Hz
9040-01-32	Mega Bender 030 pipe bending machine max capacity 70 x 4 mm 380V 3-phase 50Hz

**9040 TOP BENDER 050/TB60**



Part number	Type
9040-01-50	Top Bender 050 pipe bending machine max capacity 60 x 4 mm 380V 50Hz 3-phase
9040-01-63	Top Bender TB60 pipe bending machine max capacity 60 x 4 m 380V 50Hz 3-phase

**9040 SUPER BENDER 060A/SB48**



Part number	Type
9040-01-60	Super Bender 060A pipe bending machine max capacity 50 x 4 mm 380V 50Hz 3-phase
9040-01-48	Super Bender SB48 pipe bending machine max capacity 50 x 4 mm 380V 50Hz 3-phase

**9040 MEDIBENDER MB 42**

Part number	Type
9040-01-44	Medibender MB 42 pipe bending machine



**9040 MEDI BENDER 070**

Part number	Type
9040-01-70	Medi Bender 070 pipe bending machine max capacity 35 x 3 mm 230V 50Hz 3-phase

**9040 MINI BENDER 092**

Part number	Type
9040-01-92	Mini Bender 092 pipe bending machine max capacity 28 x 1,5 mm 230V 50Hz 3-phase

**9102 MIDIBEND 6-18**

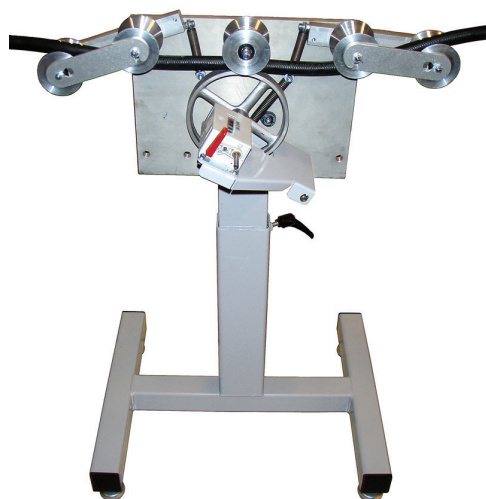
Part number	Type
9102-00-00	MidiBend pipe bending machine "B" manual

Comes with steel former part for 6 - 18 mm

**9086 C42**

Part number	Type
9086-00-01	C42 pipe bending machine 230V 50Hz 1-phase max capacity 6x2 - 42x4
Length:	680 mm
Width:	880 mm
Height:	910 mm
Weight:	100 kg

**9004 MEASURE MAN 5-50**



MeasureMan 5-50 is a measuring machine for hoses from 3/16" to 2". The machine automatically adjusts to the hose size and centers during use. The measuring device is used in combination with our hose reels HoseReel 1, HoseReel 7, AutoReel H and AutoReel V.

Hose capacity: 1/8" - 2"

Width: 600 mm  
 Height: 360 mm  
 Weight: 8,5 kg

**Stand dimension**

Adjustable height: 570-950 mm  
 Weight: 17,0 kg

**ACCESSORIES**

Part number	Type
9004-00-04	MeasureMan

Part number	Type
9004-00-06	Stand for MeasureMan 5-50

## 9041 STEEL FORMER PART



Steel former part for MegaBender, TopBender, SuperBender, Medibender and MiniBender.

r=bend radius, e.g. r36 is equivalent to a bend radius of 36 mm

Part number	Type		
9041-36-05	Steel former parts r36 for 5 mm pipes	9041-10-25	Steel former parts r100 for 25 mm pipes
9041-36-06	Steel former parts r36 for 6 mm pipes	9041-10-26	Steel former parts r100 for 26 mm pipes
9041-36-08	Steel former parts r36 for 8 mm pipes	9041-10-28	Steel former parts r100 for 28 mm pipes
9041-36-10	Steel former parts r36 for 10 mm pipes	9041-10-30	Steel former parts r100 for 30 mm pipes
9041-36-12	Steel former parts r36 for 12 mm pipes	9041-10-32	Steel former parts r100 for 32 mm pipes
9041-36-13	Steel former parts r36 for 13 mm pipes	9041-10-35	Steel former parts r100 for 35 mm pipes
9041-36-14	Steel former parts r36 for 14 mm pipes	9041-10-40	Steel former parts r100 for 40 mm pipes
9041-36-15	Steel former parts r36 for 15 mm pipes	9041-10-42	Steel former parts r100 for 42 mm pipes
9041-36-16	Steel former parts r36 for 16 mm pipes	9041-10-45	Steel former parts r100 for 45 mm pipes
9041-36-18	Steel former parts r36 for 18 mm pipes	9041-10-48	Steel former parts r100 for 48 mm pipes
9041-36-19	Steel former parts r36 for 19 mm pipes		
		9041-11-28	Steel former parts r110 for 28 mm pipes
9041-46-14	Steel former parts r46 for 14 mm pipes	9041-11-30	Steel former parts r110 for 30 mm pipes
9041-46-15	Steel former parts r46 for 15 mm pipes	9041-11-32	Steel former parts r110 for 32 mm pipes
9041-46-16	Steel former parts r46 for 16 mm pipes	9041-11-35	Steel former parts r110 for 35 mm pipes
9041-46-18	Steel former parts r46 for 18 mm pipes	9041-11-38	Steel former parts r110 for 38 mm pipes
9041-46-19	Steel former parts r46 for 19 mm pipes	9041-11-40	Steel former parts r110 for 40 mm pipes
9041-46-20	Steel former parts r46 for 20 mm pipes	9041-11-42	Steel former parts r110 for 42 mm pipes
9041-46-22	Steel former parts r46 for 22 mm pipes		
		9041-12-50	Steel former parts r120 for 50 mm pipes
9041-56-18	Steel former parts r56 for 18 mm pipes	9041-12-55	Steel former parts r120 for 55 mm pipes
9041-56-19	Steel former parts r56 for 19 mm pipes		
9041-56-20	Steel former parts r56 for 20 mm pipes	9041-13-38	Steel former parts r130 for 38 mm pipes
9041-56-22	Steel former parts r56 for 22 mm pipes	9041-13-40	Steel former parts r130 for 40 mm pipes
9041-56-24	Steel former parts r56 for 24 mm pipes	9041-13-42	Steel former parts r130 for 42 mm pipes
9041-56-25	Steel former parts r56 for 25 mm pipes	9041-13-45	Steel former parts r130 for 45 mm pipes
9041-56-26	Steel former parts r56 for 26 mm pipes	9041-13-48	Steel former parts r130 for 48 mm pipes
9041-56-28	Steel former parts r56 for 28 mm pipes	9041-13-50	Steel former parts r130 for 50 mm pipes
		9041-13-55	Steel former parts r130 for 55 mm pipes
9041-67-18	Steel former parts r67 for 18 mm pipes	9041-13-60	Steel former parts r130 for 60 mm pipes
9041-67-19	Steel former parts r67 for 19 mm pipes		
9041-67-20	Steel former parts r67 for 20 mm pipes	9041-15-38	Steel former parts r150 for 38 mm pipes
9041-67-22	Steel former parts r67 for 22 mm pipes	9041-15-40	Steel former parts r150 for 40 mm pipes
9041-67-24	Steel former parts r67 for 24 mm pipes	9041-15-42	Steel former parts r150 for 42 mm pipes
9041-67-25	Steel former parts r67 for 25 mm pipes	9041-15-45	Steel former parts r150 for 45 mm pipes
9041-67-26	Steel former parts r67 for 26 mm pipes	9041-15-48	Steel former parts r150 for 48 mm pipes
9041-67-28	Steel former parts r67 for 28 mm pipes	9041-15-50	Steel former parts r150 for 50 mm pipes
9041-67-30	Steel former parts r67 for 30 mm pipes	9041-15-55	Steel former parts r150 for 55 mm pipes
9041-67-32	Steel former parts r67 for 32 mm pipes	9041-15-60	Steel former parts r150 for 60 mm pipes
9041-82-24	Steel former parts r82 for 24 mm pipes	9041-17-38	Steel former parts r170 for 38 mm pipes
9041-82-25	Steel former parts r82 for 25 mm pipes	9041-17-40	Steel former parts r170 for 40 mm pipes
9041-82-26	Steel former parts r82 for 26 mm pipes	9041-17-42	Steel former parts r170 for 42 mm pipes
9041-82-28	Steel former parts r82 for 28 mm pipes	9041-17-45	Steel former parts r170 for 45 mm pipes
9041-82-30	Steel former parts r82 for 30 mm pipes	9041-17-48	Steel former parts r170 for 48 mm pipes
9041-82-32	Steel former parts r82 for 32 mm pipes	9041-17-50	Steel former parts r170 for 50 mm pipes
9041-82-35	Steel former parts r82 for 35 mm pipes		
9041-90-25	Steel former parts r90 for 25 mm pipes	9041-19-38	Steel former parts r190 for 38 mm pipes
9041-90-35	Steel former parts r90 for 35 mm pipes	9041-19-40	Steel former parts r190 for 40 mm pipes
9041-90-38	Steel former parts r90 for 38 mm pipes	9041-19-42	Steel former parts r190 for 42 mm pipes
9041-90-40	Steel former parts r90 for 40 mm pipes	9041-19-48	Steel former parts r190 for 48 mm pipes
9041-90-42	Steel former parts r90 for 42 mm pipes	9041-19-50	Steel former parts r190 for 50 mm pipes
		9041-19-55	Steel former parts r190 for 55 mm pipes
		9041-19-60	Steel former parts r190 for 60 mm pipes



# KAPPAFLEX 2K CO

CAN WITHSTAND HIGH PRESSURE

COMPACT

CERTIFIED



[www.hydroscand.com](http://www.hydroscand.com)